

T-Plan Robot Enterprise version 2.0

Product Specification

Product Overview

T-Plan Robot Enterprise is one of the most flexible and universal black box automated testing tools on the market used by individuals and Fortune 500 organizations to improve the overall quality of their applications. Developed on generic image based testing principles, it provides a human-like approach to software testing and it performs well in situations where other tools may fail. As a result of its open and carefully designed architecture, detailed documentation and partly open source model it is simple to adopt, integrate and customize. Watch a video or take the tutorial for a quick introduction.

Major benefits of T-Plan Robot Enterprise include:

- Platform independence (Java). T-Plan Robot runs on, and automates all major systems, such as Windows, Linux, Unix, Solaris and certain mobile platforms.
 - Wide range of testable applications. As automation is based on generic image principles and runs at the OS desktop level, technology of the tested application is not relevant. The tool can automate Java, C++/C#, .NET applications, web applications (browser testing), mobile platforms and command line interfaces as well as environments usually considered impossible to automate, such as OS installation or testing of embedded systems.
 - Support of Java test scripts as well as a proprietary scripting language.
 - Record & Replay capability.
 - Support of testing over the RFB protocol (better known as VNC).
 - Easy to customize and integrate thanks to open architecture with a generic plugin interface and well documented programming interfaces.
- Tight integration with test management products such as T-Plan Professional 7.0.



Supported Configurations

Automation is based on remote desktop technologies such as the Remote Frame Buffer (RFB, better known as Virtual Network Computing, VNC) where T-Plan Robot acts as a client driving a desktop server running on a remote or local host.

VNC software typically operates in a client-server environment where the client and server are physically two different machines or at least two different OS instances. That's why we distinguish two systems in each supported configuration:

- **The Client System** runs Java and T-Plan Robot Enterprise. It may be any system supported by Java 1.6 or higher.
- **The System Under Test (SUT)** is a machine running the VNC server with the Application Under Test (AUT). It may be any system capable of running an RFB 3.3 compliant VNC server.

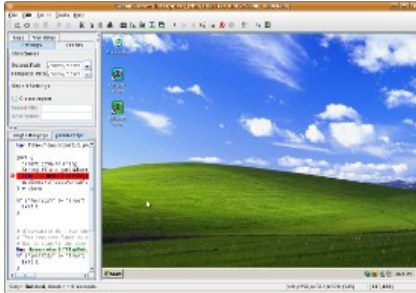
Nature of the VNC technology allows to set up automated testing on top of three basic configurations:



- **Single operating system with multiple desktops.** This scenario is limited to Unix/Linux systems which support running of multiple VNC desktop instances on a single system. The machine in this case serves both as the client system and the SUT. Single OS configuration is ideal for T-Plan Robot Enterprise evaluation and test script development for Unix/Linux users.
- **Single machine with virtual OS instances** involves one operating system running T-Plan Robot Enterprise with one or more virtual OS instances hosted in VMware or VirtualBox. The virtual systems serve as SUT. This configuration is suitable for T-Plan Robot Enterprise evaluation and test script development on most major operating systems.
- **Dual machine environment** is a classic client-server configuration consisting of a client machine and a stable dedicated test server running VNC. This configuration is recommended for automation production scenarios.

Instructions on how to install and configure client and test systems are available in the [Release Notes](#) document.

Features



T-Plan Enterprise features comprehensive **Java Swing GUI** which supports user interaction with the connected remote desktop as well as easy development and maintenance of test scripts.

A complete guide to the GUI is provided in the Help system of the installed product as well as in the on line [GUI Reference](#) docs collection.

Test scripts are simple programs which reproduce user interaction with the testing environment. T-Plan Robot Enterprise supports two script types:

- **Regular test scripts** rely on the [T-Plan Robot Enterprise Scripting Language](#). The language is simple, text-based and close to spoken English and thus easy to understand. Regular test scripts are fully supported by the GUI and there are several mechanisms allowing to create reusable pieces of code (scripted procedures) and organize them into libraries. Regular test scripts may be also hybrid and contain snippets of Java code (Java code blocks) or even call Java test script classes.
- **Java test scripts** are written in the Java 1.6 programming language and rely on the [T-Plan Robot Enterprise Java API](#). This approach allows to benefit from the advanced Java platform and a wide range of available libraries. Though using of a Java IDE such as Netbeans or Eclipse is highly recommended for development of Java code, T-Plan Robot Enterprise is able to compile Java source code and execute it on the fly. Java test scripts may also act as standalone programs (having their own main() method) or they may be instantiated and executed from third party applications.

Besides manual execution from the GUI, test scripts may be also started in an automated fashion through the [Command Line Interface \(CLI\)](#). This allows to integrate calls of automated testing processes into schedulers and third party applications.

For a detailed, step-by-step product introduction take the on line [T-Plan Robot Enterprise v2 Tutorial](#).